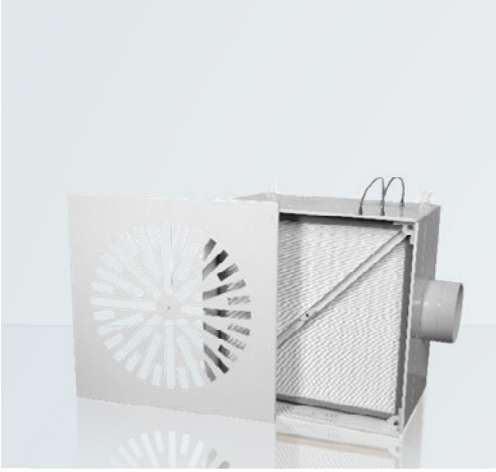


HEPABOX

Hepa Filters Box
Hepa Filtre Kutusu



HBKPYT25NSH-0630-0630-0410

FILTER CODE STRUCTURE FİLTRE KOD YAPISI

Equipment Type Ekipman Tipi	HB	HEPABOX
Edge Model Çerçeve Modeli	K	With Knife Edge Bıçaklı Model
Metal Type Metal Tipi	P	Electrostatic Painted Metal Elektrostatik Boyalı Metal
Air Chimney Side Hava Bacası Girişi	Y	Side Entrance Yandan Girişli
Air Chimney Hava Bacası	T	Single Tek
Chimney Diameter Baca Çapı	25	25 mm
Damper Model Damper Model	N	Without Damper Dampersiz
Diffuser Type Difüzör Bağlantı Modeli	S	Swirl Dif. Swirl Dif.
Absolute Filter Hepa Filtre	H	Yes Evet
Case Size Kasa Ölçüsü		0630-0630-0410

APPLICATIONS

- Hepa terminal filter boxes are air outlets with built-in particulate filters provides for filtration and distribution of air. Separation of germs, viruses and dust particles takes place right before the air entry into the room immediately after the air distribution element. Thus risks and disadvantages of central filtration system such as cross contamination through ventilation ducts are eliminated.

Ceiling hoods are used in ;

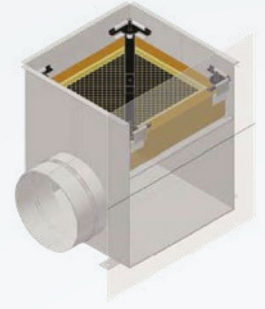
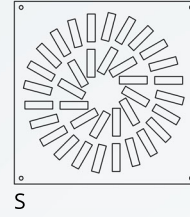
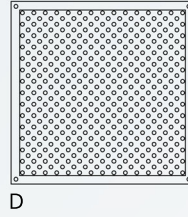
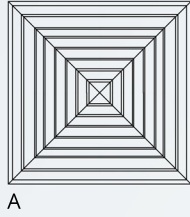
- Pharmaceutical, Hospital, Laboratories, Electronics, Food processing industries requiring a very high degree of clean air
- They are designed for use in laminar flow clean rooms
- The hoods are typically installed in on inverted T-bar grid suspended from the ceiling
- When unit reaches its maximum recommended resistance, hepa filter is discarded

UYGULAMALAR

- Hepa terminal filtre kutuları içine yerleştirilen partikül filtreli hava çıkışlarıdır
- Hava filtreleme ve dağıtımını sağlar.
- Hava girişinden hemen önce mikropların, kirlerin ve toz partiküllerinin ayrılması gerçekleşir. Hava, dağıtım elemanından hemen sonra odaya girer
- Böylece merkezi filtreleme sisteminin havalandırma kanalları içerisindeki çapraz buluşma gibi riskleri ve dezavantajları ortadan kalkar
- Tavan davlumbazları; ilaç, Hastane, Laboratuvarlar, Elektronik, Gıda işleme çok yüksek temiz havayı gerektiren endüstriler
- Laminer akışlı temiz odalarda kullanılmak üzere tasarlanmıştır.
- Davlumbazlar tipik olarak tavandan asılı T-çubuk ızgara üzerine monte edilir
- Ünite azami önerilen direncine ulaştığında, hepa filtre atılır

HEPABOX

Hepa Filters Box
Hepa Filtre Kutusu



Product Code	Material Type	Hepa Box Size mm W x L x D	Filter Size mm W x L x D	Weight kg
HBFPYT15NSH-0325-0325-310	Electrostatic Painted Metal	0325-0325-310	0305-0305-069 / 078	9.00
HBFPYT20NSH-0325-0630-360	Electrostatic Painted Metal	0325-0630-360	0305-0610-069 / 078	13.50
HBFPYT20NSH-0480-0480-360	Electrostatic Painted Metal	0480-0480-360	0457-0457-069 / 078	14.00
HBFPYT25NSH-0630-0630-410	Electrostatic Painted Metal	0630-0630-410	0610-0610-069 / 078	20.00

Product Code	Material Type	Hepa Box Size mm W x L x D	Filter Size mm W x L x D	Weight kg
HBFPYT15NSH-0325-0325-382	Electrostatic Painted Metal	0325-0325-382	0305-0305-110 / 150	10.00
HBFPYT20NSH-0325-0630-432	Electrostatic Painted Metal	0325-0630-432	0305-0610-110 / 150	15.00
HBFPYT20NSH-0480-0480-432	Electrostatic Painted Metal	0480-0480-432	0457-0457-110 / 150	15.50
HBFPYT25NSH-0630-0630-482	Electrostatic Painted Metal	0630-0630-482	0610-0610-110 / 150	22.00

Product Code	Material Type	Hepa Box Size mm W x L x D	Filter Size mm W x L x D	Weight kg
HBFPYT15NSH-0325-0325-524	Electrostatic Painted Metal	0325-0325-524	0305-0305-292	11.00
HBFPYT20NSH-0325-0630-574	Electrostatic Painted Metal	0325-0630-574	0305-0610-292	16.00
HBFPYT20NSH-0480-0480-574	Electrostatic Painted Metal	0480-0480-574	0457-0457-292	16.50
HBFPYT25NSH-0630-0630-624	Electrostatic Painted Metal	0630-0630-624	0610-0610-292	23.00

Product Code	Material Type	Hepa Box Size mm W x L x D	Filter Size mm W x L x D	Weight kg
HBFPUT15NSH-0325-0325-280	Electrostatic Painted Metal	0325-0325-280	0305-0305-069 / 078	9.00
HBFPUT20NSH-0325-0630-280	Electrostatic Painted Metal	0325-0630-280	0305-0610-069 / 078	13.50
HBFPUT20NSH-0480-0480-280	Electrostatic Painted Metal	0480-0480-280	0457-0457-069 / 078	14.00
HBFPUT25NSH-0630-0630-280	Electrostatic Painted Metal	0630-0630-280	0610-0610-069 / 078	20.00

Product Code	Material Type	Hepa Box Size mm W x L x D	Filter Size mm W x L x D	Weight kg
HBFPUT15NSH-0325-0325-352	Electrostatic Painted Metal	0325-0325-352	0305-0305-110 / 150	10.00
HBFPUT20NSH-0325-0630-352	Electrostatic Painted Metal	0325-0630-352	0305-0610-110 / 150	15.00
HBFPUT20NSH-0480-0480-352	Electrostatic Painted Metal	0480-0480-352	0457-0457-110 / 150	15.50
HBFPUT25NSH-0630-0630-352	Electrostatic Painted Metal	0630-0630-352	0610-0610-110 / 150	22.00

Product Code	Material Type	Hepa Box Size mm W x L x D	Filter Size mm W x L x D	Weight kg
HBFPUT15NSH-0325-0325-494	Electrostatic Painted Metal	0325-0325-494	0305-0305-292	11.00
HBFPUT20NSH-0325-0630-494	Electrostatic Painted Metal	0325-0630-494	0305-0610-292	16.00
HBFPUT20NSH-0480-0480-494	Electrostatic Painted Metal	0480-0480-494	0457-0457-292	16.50
HBFPUT25NSH-0630-0630-494	Electrostatic Painted Metal	0630-0630-494	0610-0610-292	23.00